

Ni-Kshay SETU

Support to End Tuberculosis

A digital learning solution designed to empower healthcare providers with seamless access to NTEP guidelines and real-time insights, enabling efficient patient-centric TB care.

Key Features of Ni-Kshay SETU

1

Visualization

Adaptive and dynamic user interface providing all TB related information under one umbrella.

2

Knowledge Support

Care Cascade Algorithm - NTEP guideline-based modules for better patient management

3

Decision-Making at Ease

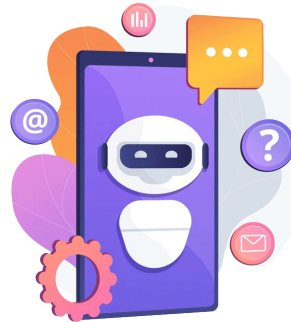
Single Window offers choice-based learning and practical solutions.

4

Multi-Lingual Support

Multiple Language Support with manually edited content.

AI Chatbot - SETU



AI-powered chatbot offering real-time guidance, case-based support and decision-making assistance for TB management.



ManageTB India



Input patient data, generate prescriptions and access vital treatment information effortlessly with an intuitive clinical decision support system.



Knowledge Connect

"Unlock TB Insights!"

Need answers? Find them here! Explore detailed information on every aspect of the TB program. Just search and learn anytime, anywhere!"



Knowledge Quiz

"Test Your TB Knowledge!"

Stay sharp with our interactive quizzes. Track your progress, identify knowledge gaps, and enhance your TB expertise.



Resource Material

"Trusted TB Resource Hub"

Access authentic, approved materials for guidance, skill development, and enhancing the quality of TB care.



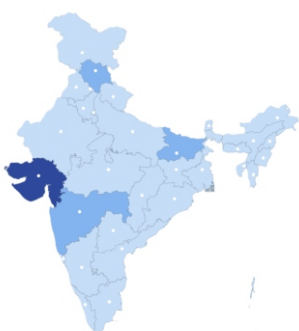
Video Library

"Comprehensive TB-related Videos"

Engaging and expert-led videos to enhance knowledge, provide guidance, and improve TB care practices.

Extensive consultative meetings with program officials, NTEP experts, clinicians and development partners, were conducted to identify and prioritise key components for designing a more user-friendly and easy-to-use digital interface.

An astonishing 43.8K+ subscribers and 1.51M+ visits, reflecting the growing impact and reach of the platform.



Subscribers from
all states and UTs of India

Users from 80% of
districts in India

70% of the users are
front-line workers

WEB APP



Available on the
App Store



GET IT ON
Google Play

SCAN HERE

